



August 2022

Dear Graduate Students and Postdoctoral Fellows,

Welcome back to a new year at Tulane! Earlier this month, we welcomed almost 400 new graduate students across the School of Liberal Arts, the School of Science and Engineering, the Biomedical Sciences Program in the School of Medicine, and the School of Public Health and Tropical Medicine. We have also had 16 new postdoctoral fellows join a variety of departments across the university this summer.

This year, the Office of Graduate and Postdoctoral Studies is working on our full return to programming for students and postdocs. COVID remains a concern, but with our high rates of vaccination at Tulane, we are optimistic that we can add in-person events back into regular rotation. We have not, however, forgotten the lessons of COVID and the technology we have mastered. Many of our resources, workshops, and events, will be available virtually to maximize the number of students and fellows who can participate. It means we can offer some workshops asynchronously through Canvas to work around your busy schedules, and other meetings can be held on Zoom so that our location on the Uptown Campus doesn't prevent people on the Downtown or Northshore Campuses from accessing services.

We will be keeping you updated on these events through this newsletter and weekly bulletins. For those of you that are continuing students or postdocs, our bulletins will replace Canvas announcements for more immediate events and deadlines. Newsletters will look further into the future. Finally, we have added social media accounts for OGPS on Facebook, Twitter, Instagram, and LinkedIn! We highly encourage you to follow us on those platforms to stay up to date on all of the news from our office.

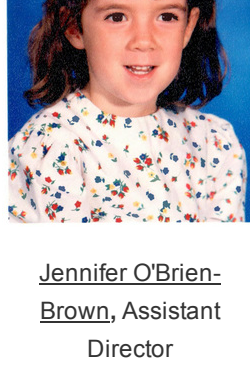
This year holds a great deal of promise and we are excited to see all of you more regularly, both in person and online. Please don't hesitate to reach out to our office if you have questions, concerns, or ideas for us to act on.

Sincerely,

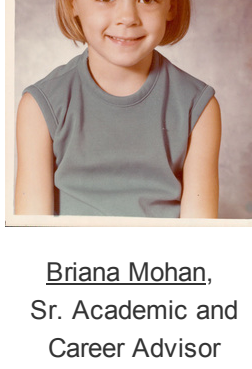
OGPS



Michael Cunningham,  
Assoc. Provost for  
Graduate Studies and  
Research



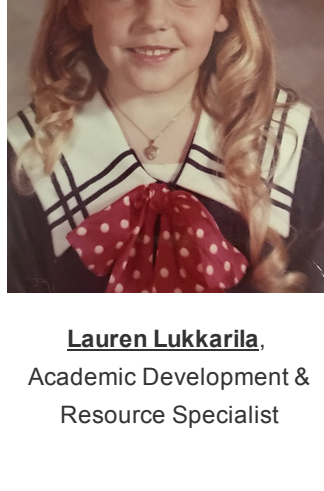
Jennifer O'Brien-  
Brown, Assistant  
Director



Briana Mohan,  
Sr. Academic and  
Career Advisor

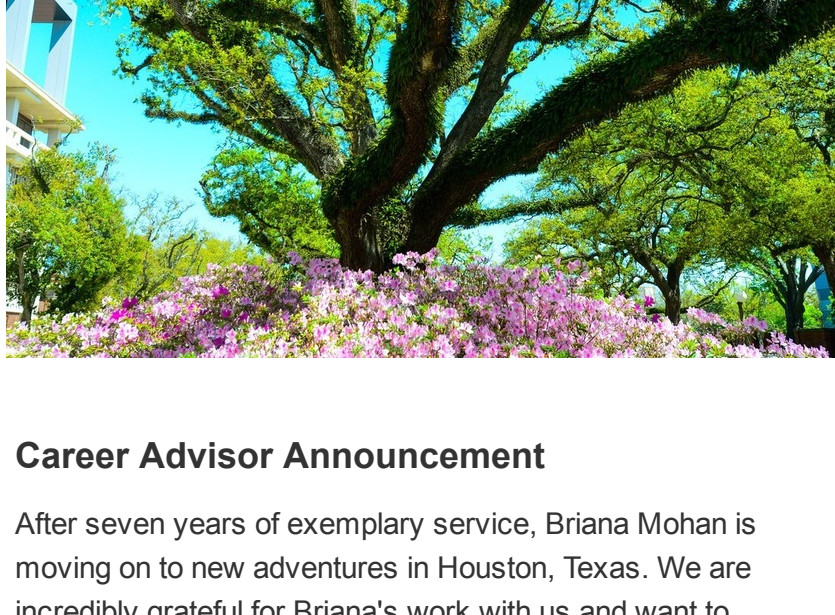


Amelia Manning,  
Administrative Program  
Coordinator



Lauren Lukkarila,  
Academic Development &  
Resource Specialist

## NEWS & ANNOUNCEMENTS



### Career Advisor Announcement

After seven years of exemplary service, Briana Mohan is moving on to new adventures in Houston, Texas. We are incredibly grateful for Briana's work with us and want to highlight a few of the many things she has accomplished during her career here and in higher education more broadly.

Briana Mohan has been working in higher education for twenty-five years and as a career advisor for graduate students and postdocs in the Office of Graduate and Postdoctoral Studies since 2015. She developed this new, full-time position to support graduate students' and postdocs' exploration of diverse career paths across disciplines and employment sectors, and also launched Tulane's annual 3 Minute Thesis competition.

During her time with OGPS, she has been very active in the [Graduate Career Consortium](#), a professional organization that serves as an international voice for graduate-level career and professional development leaders. She was elected to two terms as Secretary (2019 – 21) and was Chair of the [GCC's 2019 annual meeting](#) in New Orleans. In addition, she contributed content to the GCC's free online career exploration and planning tool, [ImaginePhD.com](#), which has had nearly 50,000 users since it launched in 2017.

Briana is also a published writer, having co-authored a case study with graduate students and fellow staff members about their leadership of Tulane's Undocumented Student Support Committee in [A Practitioner's Guide to Supporting Graduate and Professional Students](#) (Routledge, 2022), contributing to "[The future of the academic workforce](#)" in [The Chronicle of Higher Education](#) (2020); and writing a [three-part series](#) for the [Carpe Careers](#) column in [Inside Higher Ed](#) (2017).

Briana has helped hundreds of Tulane graduate students and postdocs find their way into successful academic, industry, non-profit, and government careers. Anyone who would like to connect with Briana is encouraged to add her on [LinkedIn](#).

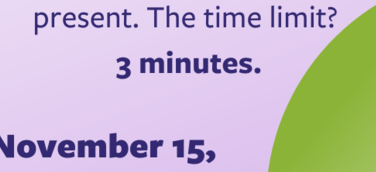
### Hurricane Preparedness

Be prepared for hurricane season! All students and postdocs should have received a mailer with helpful information about emergency prep. Click [here](#) to view and download a copy of the flyer. Please make a note of the many sources of information for disasters and be sure to develop your personal evacuation plan.

### Three Minute Thesis

Advanced PhD students: Win fame and glory by participating in the Three Minute Thesis Competition on November 15! This is an excellent opportunity for you to hone your presentation skills and learn to speak fluently about your research to a wide audience. For more information, please visit [here](#) or email [ogps@tulane.edu](mailto:ogps@tulane.edu).

All students, postdocs, faculty, and staff: Please save the date for the Tulane Three Minute Thesis competition on November 15 at 3 pm! We would love to see you come out to support your colleagues and enjoy a light reception in their honor. For more information, please visit [here](#) or email [ogps@tulane.edu](mailto:ogps@tulane.edu).




### Three Minute Thesis Competition

And 80,000 word thesis would take 9 hours to present. The time limit?  
**3 minutes.**

**Tuesday, November 15,  
2022 at 3 PM  
Kendall-Cram Lecture  
Hall, LBC**

Want to participate?  
Questions? Email  
[ogps@tulane.edu](mailto:ogps@tulane.edu)



TULANE UNIVERSITY  
OFFICE of GRADUATE &  
POSTDOCTORAL STUDIES

### OGPS Fellows

The OGPS is looking for graduate student fellows for the 2022-2023 school year. Each fellow will work on multiple projects that are a combination of identified needs of OGPS and the fellows' own projects that they identify and develop.

View the full description [here](#), and please apply using [this form](#).

## OPPORTUNITIES

### Webpage for Graduate Student and Postdoctoral Fellow Opportunities

OGPS is notified periodically of opportunities for Tulane graduate students and postdoctoral fellows. These can range from part-time work-study jobs to assistantships, to full-time employment opportunities after graduation. This month, we have a posting from Tulane's University Communications Department, among others. Please check our [webpage](#) frequently as we will try to update this page when we learn of new openings.

This month, there are positions available for multiple graduate assistants in the Center for Public Service and a research assistant position in the Newcomb Art Museum.

### Mentoring Up: Resources for Success in Research Integrity

**Virtual Conference | October 26 – 27, 2022**

Supportive mentoring is critical in ensuring a positive climate which fosters diversity, integrity, and robust research. We invite you to participate in a free two-day virtual conference providing insights into beneficial mentoring to support the needs of mentors, mentees, and research institutions.

This free conference is open to all individuals involved in research at higher education institutions. It is targeted to faculty, research integrity practitioners, administrators, graduate students, and postdoctoral scholars. To learn more about the conference and register, please visit [here](#).

## REGULAR RESOURCES

The following resources are always available for Tulane students, scholars, and fellows:

[Pregnancy.tulane.org](#) - for any parenting situation

[Counseling Services](#)

[Concerns](#) - for any type of concern report, whether for yourself or for another

[Accessibility Services](#)

[Swipe Out Hunger](#) - combatting food insecurity at Tulane

[NCFDD](#) - for faculty, TAs, and future faculty

[Grad/PhD/Postdoc Opportunities](#) (within Tulane and outside)

[Learn More](#)



## UPCOMING EVENTS

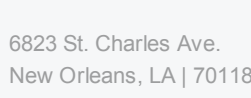
### The PhD Journey from Coursework to Career

*Monday, September 12,  
4-5 PM*

Are you a Master's student considering applying to a PhD program or a first or second year PhD student wanting an overview of the next steps in your PhD journey? In this workshop, we will discuss how to navigate and prepare for the phases and transition points that mark the pathway of a PhD student. Led by Dr. Lauren Lukkarila.

[Register here](#)

Share this email:



[Manage](#) your preferences | [Opt out](#) using TrueRemove®  
Got this as a forward? [Sign up](#) to receive our future emails.

View this email [online](#).

6823 St. Charles Ave.  
New Orleans, LA | 70118 US

This email was sent to:  
To continue receiving our emails, add us to your address book.

[Subscribe](#) to our email list.