



August 2020

Welcome (back) to Tulane! This is an extraordinary time in our history, and though the challenges are substantial, we look forward to working with you.

This year, we are welcoming almost 500 new PhD and master's degree students to the School of Liberal Arts, School of Science and Engineering, and Biomedical Sciences Program. Their orientation looked a little bit different this year as it was conducted through Canvas, but we believe that we were able to aggregate the resources of a traditional orientation in a format that works for our times.

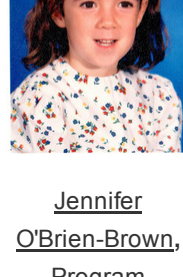
Tulane has created an extensive and thorough plan to mitigate the impact of CoVid on our college campuses and we are hopeful that it will lead to a successful and productive semester for all of our students, faculty, and staff.

OGPS remains committed to being available and accessible to all students, whether you are on campus or remote this semester. In addition to offering virtual workshops, Briana, Jennifer, and Lauren will all be available for appointments virtually.

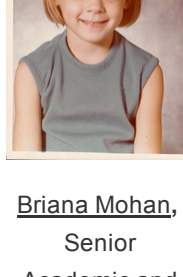
P.S. Please enjoy these classic back-to-school photos!



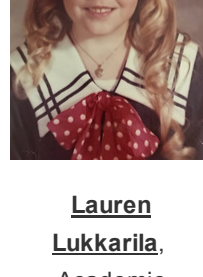
Michael Cunningham, Assoc. Provost for Graduate Studies and Research



Jennifer O'Brien-Brown, Program Manager



Briana Mohan, Senior Academic and Career Advisor



Lauren Lukkarila, Academic Development & Resource Specialist

IN MEMORIAM

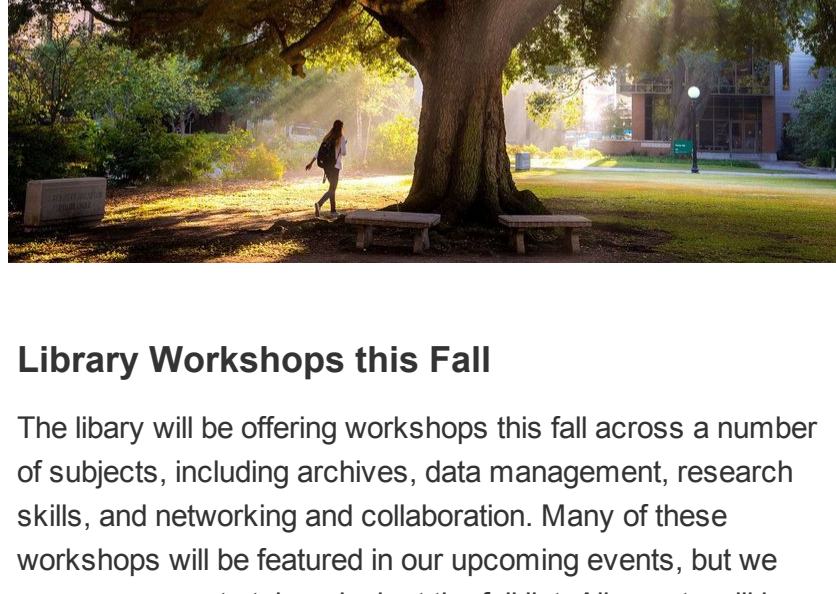


Tulane Neuroscience PhD student Jamie Jondel Morford passed away on August 18, 2020 in New Orleans, Louisiana. She lived most of her life in Omaha, Nebraska, graduating from Grinnell College with a BS and then proceeding to graduate school at Tulane, where she had recently successfully defended her dissertation.

A memorial service for Jamie will be held in New Orleans tomorrow, August 27 at 2 pm. More information can be found here.

We urge all Tulane students, faculty, and staff members in need of assistance to contact our support services. Counseling is available to students 24/7 through The Line at 504-264-6074. Students may also contact Case Management 24/7 at 504-920-9900.

NEWS & ANNOUNCEMENTS



Library Workshops this Fall

The library will be offering workshops this fall across a number of subjects, including archives, data management, research skills, and networking and collaboration. Many of these workshops will be featured in our upcoming events, but we encourage you to take a look at the full list.

New Laptop Lending Program

Tulane Information Technology (IT) has released many new tools to support the academic success of our graduate students. With the support of USG and GAPSA, they recently launched a laptop lending program for all in person TU students.

GAPSA and You

In addition to your divisional student government bodies, the Biomedical Sciences Student Association (BMSSA) and the Graduate Studies Student Association (GSSA), the Graduate and Professional Student Association (GAPSA) represents your interests on campus.

Every graduate and professional student at Tulane University is a member of GAPSA. The organization of GAPSA consists of an Executive Council and an Assembly of Senators.

Executive Council

President - Arianne D. Sacramento (She/Her) MD/MBA/MPH Student

Executive Vice President - Jordan Fontheim (He/Him) MBA/MHA Student

Finance Vice President - Harrison (Harry) Fox (He/Him) MBA/MS in Business Analytics Student

Communications Vice President - Catherine Grimm (She/Her) JD Student

Uptown Vice President - Sarah Mellman (She/Her) PhD Student in Anthropology

Downtown Vice President - Oluwatomi (Tomi) Akingbola (He/Him) MD Student

GAPSA Assembly

The GAPSA Assembly members include 28 elected Senators from GAPSA's nine graduate and professional school divisions. Each division has at least one elected GAPSA Senator, who act as their respective division's liaison to GAPSA.

Student and Postdoc Highlights

This month, we're highlighting Angelle Bradford, the current president of the Biomedical Sciences Association. Angelle's research focuses on physiology and medicine; you can read about that and her volunteer work on our student highlights page.

If you are interested in submitting a story for this section (about yourself or a colleague), please use this form.

Career Resources

- InterSect Job Simulations is an online platform that allows PhD-level scientists and humanists, regardless of professional stage, to explore future career options.
Informational Interview 2.0 Podcast features Duke University's Melissa Bostrom discussing how career development and innovation are intertwined.
The Carpe Careers column in Inside Higher Ed is a weekly career advice column for PhDs and postdocs.
Especially for those who are considering academic positions, 'Tales from the Academic Job Market' is a very helpful entry on Dr. Christopher T. Smith's Reflections blog.
The Council of Graduate Studies (CGS) just released a new report -- Closing Gaps in our Knowledge of PhD Career Pathways: How Do Biological and Life Sciences PhD Holders Transition into the Workforce?.

OPPORTUNITIES

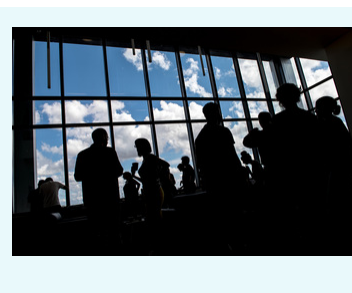
Support for Postdocs to Attend the National Postdoctoral Association Conference

The NPA is pleased to offer multiple types of assistance to postdoctoral fellows who would like to attend their annual conference next spring (April 16-18, 2021) in Philadelphia. Postdocs can apply for travel grants and childcare grants to support their participation in the conference.

Webpage for Graduate Student and Postdoctoral Fellow Opportunities

OGPS is notified periodically of opportunities for Tulane graduate student and postdoctoral fellows. These can range from part time work-study jobs to assistantships, to full time employment opportunities after graduation.

Learn More



UPCOMING EVENTS

Introduction to Citation Management Tools - Tues. Sept 1, 10 am

Citation management tools such as Zotero, RefWorks, EndNote and Mendeley can help you to store the citations you find during your research. They all make it incredibly easy to format a reference/works cited list. Which is best for you? This workshop will provide a brief overview of each tool so you can be aware of your options before deciding what tool is best for you.

Presented by Ginette Argüello, LMSW. This workshop series aims to build community and provide an empowering space for Latinx students to thrive at Tulane.

Registered here. A complete list of groups organized by CAPS is here.

¡Salud! workshop series - Sept. 17, Oct. 15 and Nov. 12

Presented by Ginette Argüello, LMSW. This workshop series aims to build community and provide an empowering space for Latinx students to thrive at Tulane.

Registered here. A complete list of groups organized by CAPS is here.

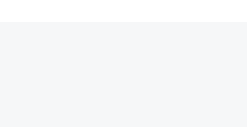
Fall Semester Academic Calendar

The fall semester began earlier than usual this year which has moved many deadlines up. Additionally, due to the truncated nature of the Fall 2020 semester, there are designated make-up days in October if the university has to close for any reason.

Beyond the Professoriate's 1st Academic Career Success Conference for Grad Students and Postdocs - Sept. 19 and 26

This conference is designed to teach graduate students proven strategies to help them advance in their academic career as a graduate student or postdoc during these uncertain times. Tickets start at just \$19. Learn more and register here.

Share this email:



Manage your preferences | Opt out using TrueRemove®

Got this as a forward? Sign up to receive our future emails.

View this email online.

6823 St. Charles Ave. New Orleans, LA | 70118 US

This email was sent to. To continue receiving our emails, add us to your address book.

Subscribe to our email list.